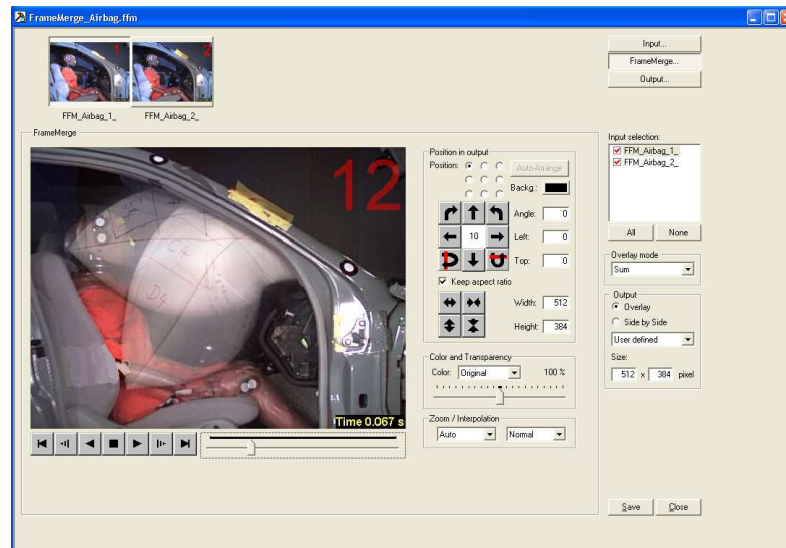


## FalCon eXtra FrameMerge

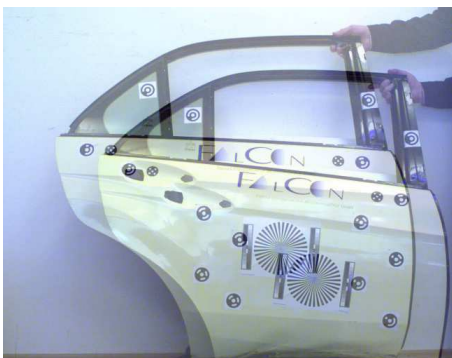
### The Tool for Merging and Comparing Multiple Image Sequences



The module **FrameMerge** offers you the comparison of several video sequences by image superposition/overlay or by split-screen/mosaic. Create descriptive result movies for documentation or representation.

The features of the module are designed acc. to the problems in the **crash-test** section: Recordings from different cameras with varying lenses and possibly variable view cut-outs are to be combined precisely aligned. The objects often cannot be configured with respect to their color and the environment is mostly fixed, therefore only small differences between congruent images can be expected.

The **user handling** is analogous to the known FalCon eXtra modules: A clearly laid out working window integrates all necessary steps. Preview and thumbnail images enable an easy visual assessment and show you the result of the merging process. All inputs and settings can be saved as a document; template files allow a quick repetition of a following test. Automatic positioning of the channels via reference markers requires MovXact license or Tracking-Plug-In license



**Express your test by multiple videos!**

## Input:

---

- Several **channels** (number not restricted) = temporal sequences of frames (raw image data or standard file formats) or AVI videos
- Per each channel:  
time mapping, picture post-processing, rectification, section, zoom  
(see Picture Transformation in FalCon Quick View)

## Assemble = Merge:

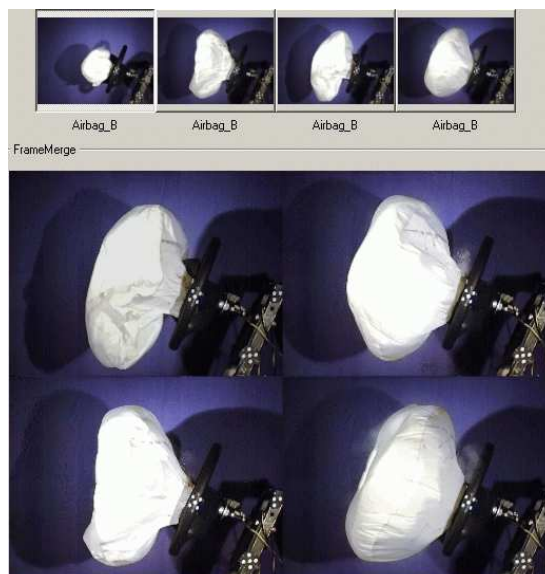
---

- Overlay transparency adjustable per each channel
- Free positioning of the channels in order to compensate different camera positions: translation, rotation, zoom and flipping.
- Dynamic matching: Automatic positioning of the channels via reference markers (= steadiness control between the channels; only with MovXact or Tracking Plug-In module possible)
- Superposition / overlay modes to choose from:  
Sum, minimum, maximum, pseudo-color  
Difference color-marked  
Overlay modes "Or (transparent)" and "Mosaic (opaque)"  
Overlay (sum) with auto-matching (statically)
- Separated modes by overlay and laying side by side
- Split-screen / mosaic up to 3x3 raster
- Insert Logos and texts
- Draw: Insert of drawing elements (can be fixed at markers)
- Zoom-function
- OrthoView: rectification according to an oblique view (CamFolder is necessary)
- Adjustable working modes

## Output:

---

- Visual assessment in the working window
- Standard picture file formats BMP, TIF, JPG
- AVI videos (uncompressed/compressed); WMV Video



## Technical Framework:

---

- Program for PC workstations with WIN Server 2008 / 2012 / 2016 / 2019 / 2022, WIN 8 / 10 / 11
- User interface compliant to MS-Windows.
- **FrameMerge** is available as extension to the basis module **QuickView**.
- **Technical specifications are subject to change.**