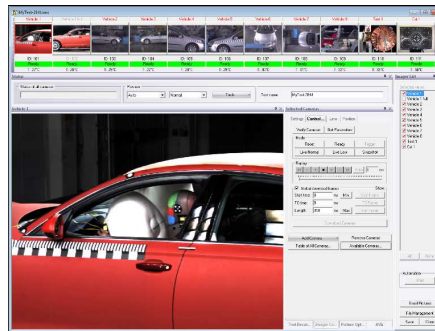


## FalCon eXtra QuickView

### The Fitting Tool for Digital High-Speed Videos: Control Cameras, Optimize Sequence Pictures Create AVIs and View AVIs Synchronized with Measured Data



#### Main features:

##### ImagerControl Basic

- See datasheet "ImagerControl"

##### Image Optimization

- Optimize sequence pictures: automatic white balance, gamma, contrast, sharpening, denoising, saturation, flip, rotate,
- Draw: Insert of drawing elements (line, grid, symbol... )

##### AVI-Creation/-Compression

- Create and compress AVI files (multi AVIs with one mouse click!)
- Creation of AVIs with not equidistant time steps and save time values to each image in file header; export/load time values as time channel
- Insert texts, time values and own logos in AVIs: Insert AVI's as logo
- Insert substitution variables for text drawings
- Scaling of drawing elements in physical units
- Movie steadiness control = anti-shake (MovXact or Tracking Plug-In is needed)
- Automatic storage as ISO-MME files

##### AVI-Player

- Playback AVIs in extensive modes (selectable size and speed, continuous replay or control via slider...)
- Auto-Layout window, movie, plot
- Get an overview by a film strip and copy pictures or diagrams into the clipboard
- Synchronize AVI files and measurement graphs via SyncPanel with time-synchronized value cursor

##### Measurement Data Viewer

- Display measurement channels in flexible diagrams:  
 Measuring data viewer **with adjustable attributes and curve parameters** as display of all names of curves with identification of color, insert of text notes, limit lines and logos ...
- Curves processing: Offset, invert, filter, time factor, insert of logos ....

##### Plot

- Editing diagrams: offset, invert, filter, time factor; inserting logos
- Measurement graphs recorded as AVI, export channel data to MS Excel workbook
- Defaults of physical units

##### 3D-measurement data viewer

##### Common

- Convert AVIs or single images into different file formats applying post-processing
- PictureView: Viewer for picture series and videos incl. navigation tree, thumbnails, print templates and file format conversion; export of channel data into excel Workbook
- Creation of image lists
- Creation of formatted reports in file format RTF

## File formats:

- Sequence pictures: raw image data of camera manufacturers BAY/TP2, BLD/SPV10/VIS, CIN, MCF, HSV and RAW 1, 2, 3 as well as standard file formats BMP, TIFF, JPEG, GIF, EMF, WMF
- Measurement channels: ISO, DIAdem, ASCII tables ...
- ISO MME (Multimedia Data Exchange Format for Impact Tests)
- Sequences: AVI Video for Windows, MP4- MOV- and WMV-video with all (installed) compression codecs (Indeo 5.1x, x265, Xvid...)

## Export

- Entire data structure acc. to ISO MME 13499 with MII (Moving Image Information)
- Image sequences in file format AVI, WMV and TIF

The **FalCon Quick View** module provides the ultimate way to control high-speed cameras of different types and manufacturers in the mixing operation in a test. Therefore the use of different operating software of the cameras can be reduced to an individual.

The software includes additionally both quick creation of image sequence files as well as convenient viewing with the use of a sequence and measurement data viewer. It also controls high-speed video cameras: set-up and identification of cameras, mode control and rapid download of picture data via Ethernet. (The included submodule **ImagerControl Basic** supports only cameras of the same manufacturer in mixed mode.)

Digital sequence pictures can be prepared and improved to create a "Video for Windows" file (AVI) from them. FalCon Quick View's batch capability makes automatic processing possible. Different picture file formats (especially of high-speed video cameras) are supported. Pictures can be processed in terms of white balance (also automatically), gamma, brightness and contrast, color matrix, sharpness and color depth. In single images and image sequences drawing elements such as line, cross, symbol and freehand drawings are able to insert in the overlay / draw mode.

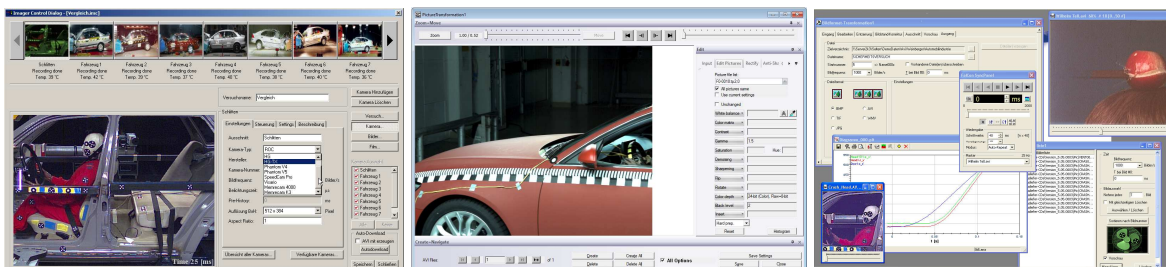
Titles and logos created with a graphics program as well as texts and time values can be inserted. AVI files are created (on request) uncompressed and thus without any loss in the individual images.

The files can then be compressed so that the AVI files can be played back more rapidly and also to save storage space. Since the program uses the "Video for Windows" interface of MS Windows, all supported (and installed) compression codecs and hardware accelerators can be used.

A viewer for AVI files (SyncPanel) enables to watch several videos simultaneously. The replay speed and size of the picture can be changed as well. Also functions for single steps, positioning, autorepeat and playback of sections are available.

It is also possible to represent measurement data as time diagrams. The handling of the measuring data viewer is very easy by the changeable attributes and adjustable curve parameters. The layout can be stored together with the measuring data as a document. As soon as an AVI file is played back with the aid of the SyncPanel, a synchronized value cursor follows not only in the time diagram, but also in all curves =  $f(t)$ . When this marker is moved interactively, the AVI files are also automatically positioned to the corresponding picture.

A viewer of **ISO MME** measurement data is included!



## Technical Framework:

- Program system for computer platforms under WIN Server 2008 / 2012 / 2016 / 2019 / 2022 WIN 8 / 10 / 11
- MS Windows-compliant user interface.
- **Changes of technology and content subject to change**