

AVI File Creation



Attention:

Since eXtra Version 5.00 the document type *AVI File Creation* is no more supported. Use *Multi AVI Creation* instead!



A “**Video for Windows**” file (**AVI**) is composed of several individual pictures:

You should load a typical picture for this purpose (from the **File/Open** menu) and then perform an optimization in individual steps. For each of the individual steps you have the option of using the **Test** function to evaluate the effects immediately and if necessary of making other settings. If you have made incorrect entries, you can use the **Original picture** function (in the **View** menu) to return to the initial picture. With the exception of the **Black Level** (where the correction takes place as soon as the program reads in the file) and **White Balance** (the program always accesses the original picture), the correction functions always work with the currently displayed picture. All the settings you selected for optimization will be saved in the registry so that they will automatically be available again the next time you start the program.



When you have achieved a satisfactory result with the individual steps, create a batch file for generating an AVI file. To do this, use **File/New** to create a new document of type **AVI Creation (*.BAC)**.

Assign a name for the AVI file and then specify which pictures you want to insert into this file (with the **Add** command). The number of pictures that can be inserted is limited in this case to 25 in the demo version.

Note: MS Windows sometimes mixes up the order of selected files in the case of a multiple selection. To avoid this, select the last file first, then go to the first file and select it by clicking with the mouse while the “Shift” key is held down.

Begin creation of the file with the **Create AVI** function. If you have selected the preview, the program will show you overview pictures of reduced size for each individual pictures.

In the full version of the program, you can also perform the creation process in batch mode. To do this, start the program with the name of the batch file and with the additional program parameter “/q”.

Then you can also compress the AVI file that has just been created as well. Compression saves space on the hard drive and makes it possible to replay jitter-free. The main disadvantages of compression are the high amount of computing time usually required and the loss in quality typically associated with it.

The File Menu

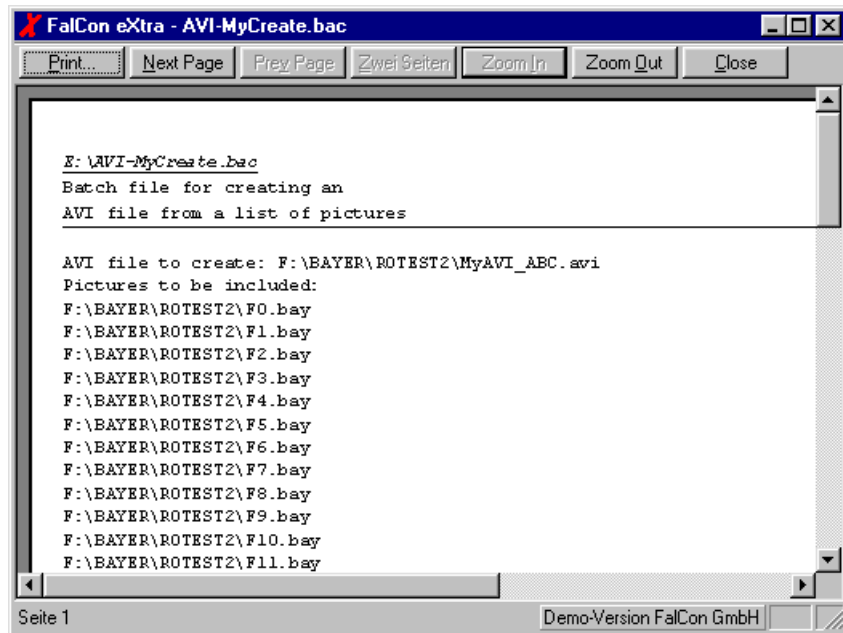


In the **File** menu you can create new documents, open existing ones, close and save picture documents, create a printout, set up the printer or exit the program. Please note that only the additional menu items corresponding to the document type under discussion are explained in this section.

Print Prints a text log of the document.

Page Preview Shows a text log of the document on the screen as it would look if it were printed out.

Page View



```
E:\AVI-MyCreate.bac
Batch file for creating an
AVI file from a list of pictures

AVI file to create: F:\BAYER\ROTEST2\MyAVI_ABC.avi
Pictures to be included:
F:\BAYER\ROTEST2\F0.bay
F:\BAYER\ROTEST2\F1.bay
F:\BAYER\ROTEST2\F2.bay
F:\BAYER\ROTEST2\F3.bay
F:\BAYER\ROTEST2\F4.bay
F:\BAYER\ROTEST2\F5.bay
F:\BAYER\ROTEST2\F6.bay
F:\BAYER\ROTEST2\F7.bay
F:\BAYER\ROTEST2\F8.bay
F:\BAYER\ROTEST2\F9.bay
F:\BAYER\ROTEST2\F10.bay
F:\BAYER\ROTEST2\F11.bay
```

Seite 1 Demo-Version Falcon GmbH

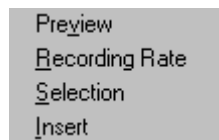
Use this menu entry if you want to be able to evaluate the appearance of the text log.

The AVI-Creation Menu



The individual menu entries are:

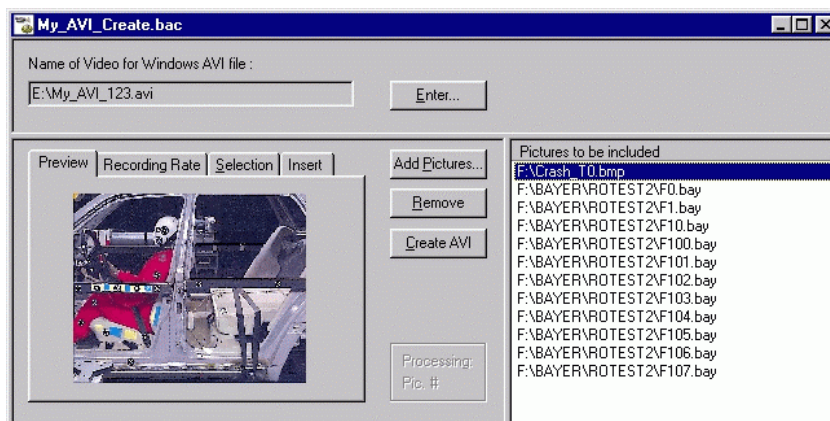
Enter AVI File Name	Enter the name of the AVI file to be created.
Add	Adds individual pictures to the creation list.
Remove Picture	Removes individual pictures from the list of pictures to be inserted.
Create AVI File	Begins creation of the AVI file.
Setting Tab	Submenu for menu-controlled selection of the following setting tabs:



Preview	Allows you to have a preview (in an overview picture of reduced size) of the currently selected individual picture.
Recording Rate Rate	Specifies the recording rate (frames per second) of the AVI file and the T0 time (ms).
Selection	Specific selection of individual pictures from the list.
Insert	Choose a logo and descriptions for inserting into the AVI file.

The individual functions are described in more detail below.

AVI Creation: Document Window and Functions



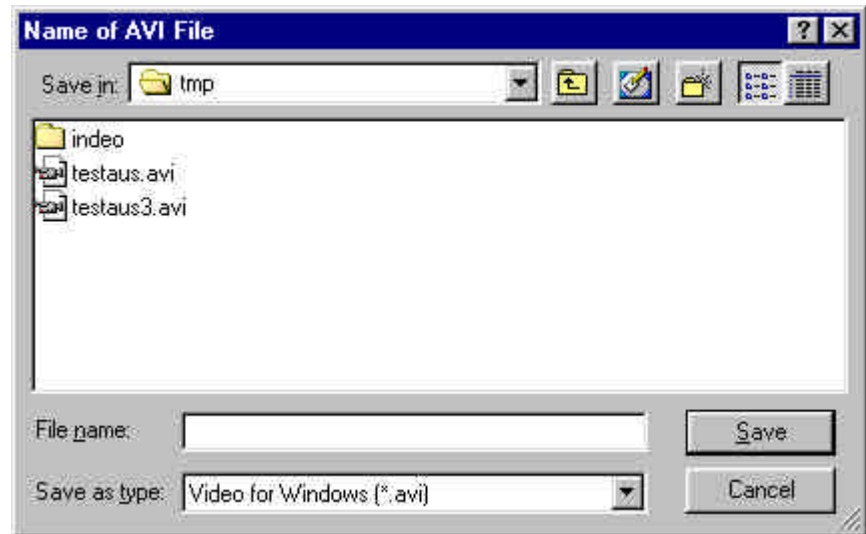
The input dialog box is divided into three areas:

- Output AVI file
- Settings for the AVI file
- A list of the individual picture files to be inserted into the AVI

The individual functions are:

Enter	Enter the name of the AVI file to be created.
Add Pictures	Adds individual pictures to the creation list.
Remove	Removes individual pictures from the list of pictures to be inserted.
Create AVI	Begins creation of the AVI file.
Preview	Allows you to have a preview (in an overview picture of reduced size) of the currently selected individual picture.
Recording Rate	Specifies the recording rate (pictures per second) of the AVI file and the T0 time.
Selection	Specific selection of individual pictures from the list.
Insert	Choose a logo and descriptions for inserting into the AVI file.

Enter



The following options allow you to specify the name and location of the file to be used for creating the AVI file.

The following options will help you to indicate the file to be opened:

File name Enter a new file name to save a document under another name. FalCon eXtra adds the extension corresponding to the type specified by you in the **Save as type** box.

File type Select the type as which the file will be saved:
*.AVI "Video for Windows" file

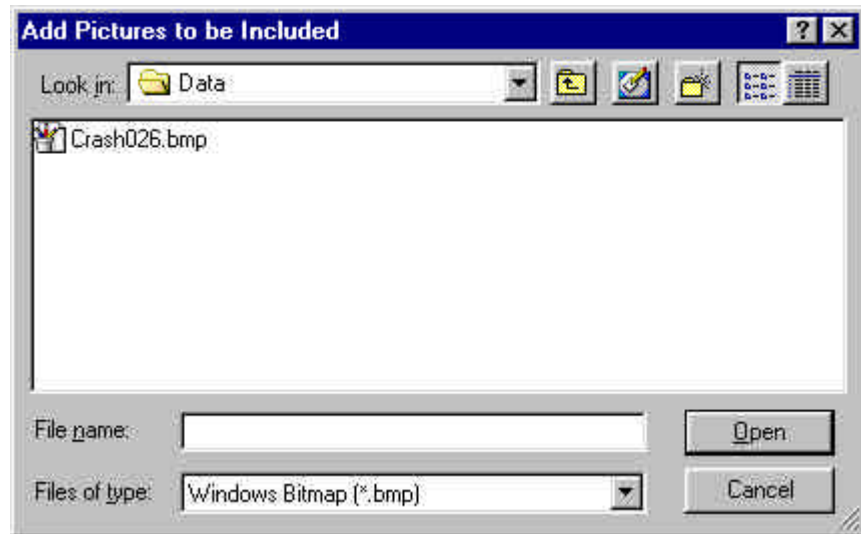
You can specify these additional details under **Save in:**

Drives Select the drive on which the file will be saved.

Directories Select the directory in which you want to save the document.

Network Use this button to assign a link to a network drive to a drive letter.

Add



You can use this command to select existing picture documents that are to be included in the Create AVI list.

The following options will allow you to indicate the files to be added:

File name	Enter the name of the file or select it from the list. This box displays only file with the filename extension selected by you in the File type box.
File type	Select the type of the file to be opened: <ul style="list-style-type: none">*.BAY Kodak Bayer picture*.BLD Weinberger picture (image sequence)*.TIF TIFF picture*.JPG JPEG picture*.BMP Windows bitmap picture*.MOT Motion picture*.WMF WMF picture*.EMF EMF picture

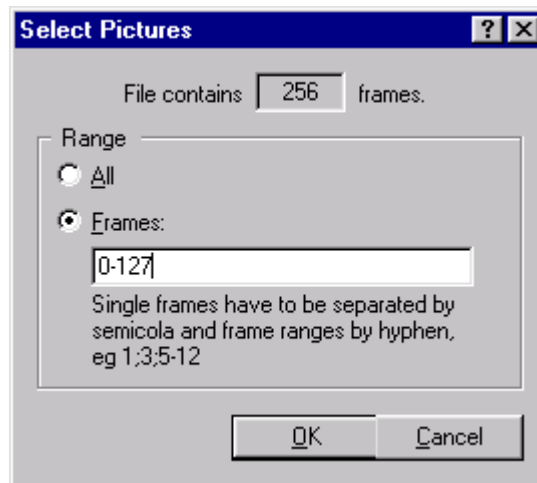
You can specify these additional details under **Look in:**

Drive	Select the drive on which FalCon eXtra saved the file you want to open.
Directory	Select the directory in which FalCon eXtra saved the file you want to open.
Network	Use this button to assign a link to a network drive to a drive letter.

You also have the typical Windows option of multiple selection.

Please note: that Windows sometimes mixes up the order of selected files in the case of a multiple selection . To avoid this, select the last file first, then go to the first file and select it by clicking with the mouse while the **Shift** key is held down.

If you want to add Weinberger picture files containing multiple pictures, you must indicate which pictures are to be added:



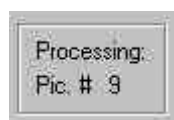
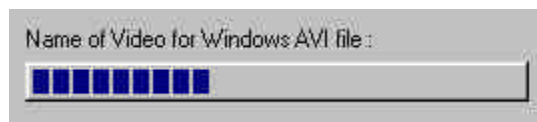
Remove

To remove a picture document from the list of pictures to be added, select the corresponding picture in the list with the mouse. As soon as you have selected the picture document, the **Remove** button is activated and you are able to remove the file from the list. This process removes the picture document **only** from the list, not from the hard drive.

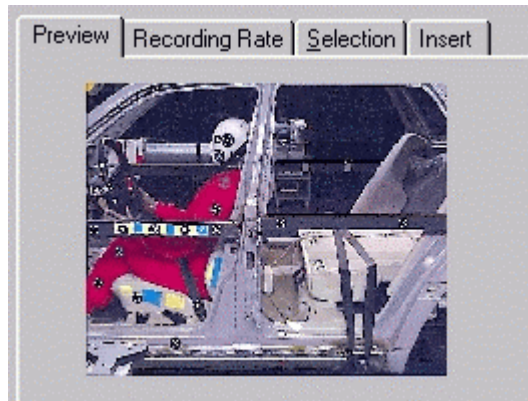
AVI Create

Use this button to begin the creation of the AVI file. As soon as the creation process is underway, you can stop it by clicking on this button (its label then changes to **Cancel**).

No other buttons can be activated during the creation process. A **progress bar** appears in the upper section of the window. The **number of the picture currently being processed** is also displayed:



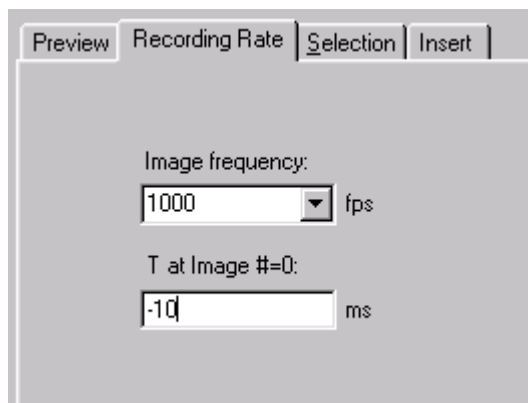
Preview



As soon as you have selected the picture file (by clicking with the mouse) an overview picture of the picture file appears in the preview tab. While the AVI file is being created, the individual pictures also appear on this page. This preview can be used as a rough control of the settings.

Please note that the **interpolation type** you selected under **File/Program Settings** is used to calculate the reduced picture view.

Recording Rate



In this tab you can indicate to the program the **recording rate** (unit fps = frames per second) at which the AVI file will be entered. Generally this is the recording frequency. This information ensures the correct time reference will be used for movie display and measured data synchronization.

You can also indicate the **Start Time T** of the AVI file (unit ms). If the entry is a negative number this means that your AVI file begins before T0. This entry can still be changed later during movie display.

Selection



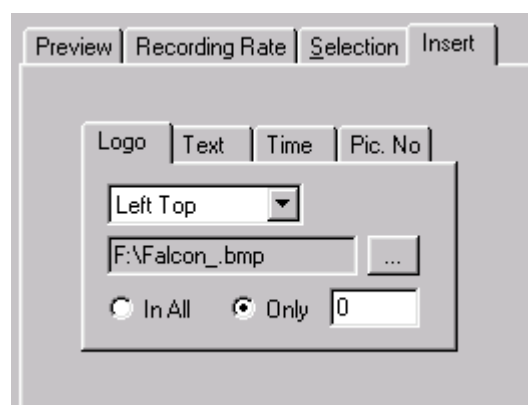
In this tab you can specify the number of pictures from which one will be added to the AVI file. If you have also selected the option **“With deleting from disk”** the picture files will simultaneously be deleted from the hard drive. Use this setting with caution!

FalCon eXtra asks you one more time whether the deletion is actually intentional.

You can also use the option **Sort by Image Number** to have the picture files sorted. This function works only with Kodak Bayer pictures, however, since the picture number is only stored internally in these pictures.

For the display and to store the document, you can choose whether you will use only the file names of the picture files or whether the path will appear before the file name. If you want to insert picture files from different directories, you must select the check box **Names together with path**. To use the AVI creation document as a batch file for different directories, however, it may be more practical to use the option pictures names “without” the path (directory).

Insert

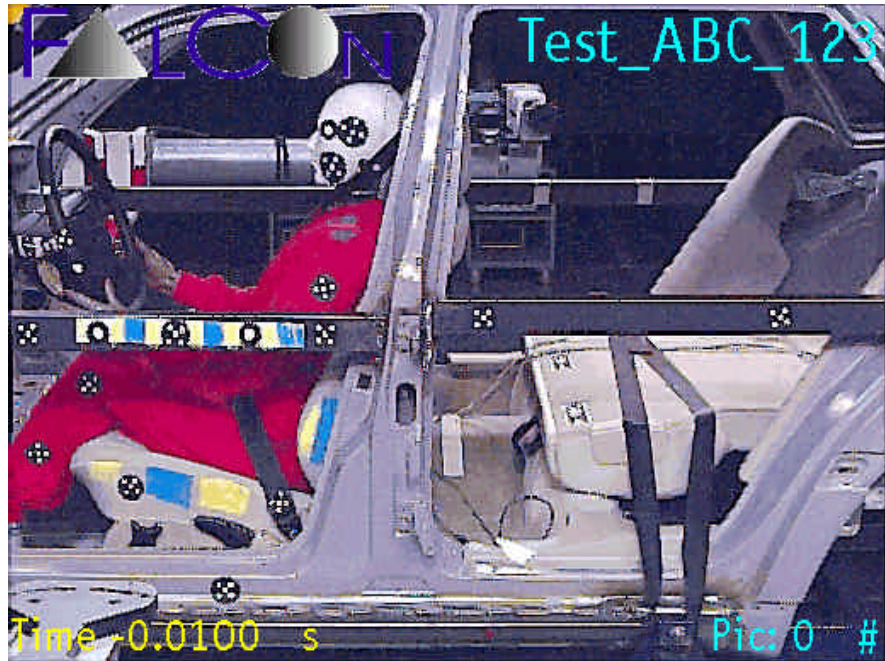


On this tab you can insert a logo and a descriptive label onto the pictures in the AVI sequence. These items are superimposed on the pictures and are permanently “burned in”.

The items can optionally be inserted **In All** pictures or **Only** in the one indicated. You can use the list box to specify the location at which the item is to appear on the picture.



The settings are saved in the registry so that only minimal effort is required of the user to repeat the layout for the next AVI creation process.

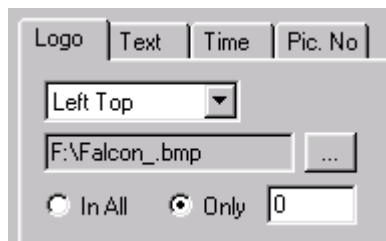


Example of an AVI picture with inserted logo and text passages

Insert - Logo

You can use any individual picture file, for example of type Windows Bitmap *.BMP, as a **logo**. To do this, enter the complete file name using the “...” Open dialog box.

Please note that the color value “completely white” (RGB = 255,255,255) is interpreted as “transparent”. At these spots on the logo picture the picture underneath it will be visible.



Example of a logo picture

Insert - Text

As a descriptive **Text** you might enter the test number or the test code, for example. You can use the **Font** button to select the font type and size as well as the color.

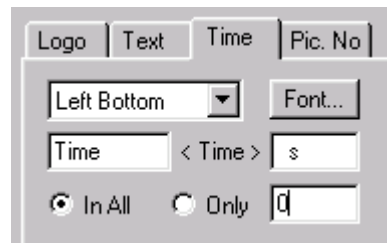


Insert - Time

If you are not using FalCon eXtra AVI Viewer to display AVIs or if you are forwarding the AVI file on to a customer, you can permanently insert the calibrated time – according to T0 and the recording rate – into the picture. The numeric format of the time value is automatically created according to the setting in the **Movie-Player**!

The following entry fields will provide you with flexibility in labeling pictures.

- Pre-text , for example “Time:” or “T =”
- <Time> , for example 0.010 (time value)
- Post-text , for example Unit “s” or “ms”



Insert – Picture Number

Along with the time, you can also have the associated picture number appear. Please note: The number of the sequence pictures begins at 0!

The following entry fields will provide you with flexibility in labeling pictures.

- Pre-text , for example “Picture”
- < No > , for example 15
- Post-text , for example “#”

