

FalCon eXtra Installation Guidelines

Installation Notes

- Working with **FalCon eXtra** a monitor resolution of at least 1280x1024 pixel with 24 bit TrueColors is recommended. Screen settings with 256 colors only are not sufficient. The layout of the dialog boxes is designed for "Small Fonts".
 - Install **FalCon eXtra** using the setup programs:
eXtra_full.exe (full version) or **eXtra_woh.exe** (without help texts).
 - Would you like to control cameras? Please install additionally the camera DLLs: **all_imc.exe**.
 - The default settings of the program are stored in the Windows registry under the key `HKEY_CURRENT_USER / SOFTWARE / FALCON / EXTRA` .
(see MS Windows **regedit**)
 - Tip: Maximize the **eXtra** main window to the full desktop.
-

Licensing

- The FalCon software modules are protected by license checks.
 - The Software Rights Management (SRM) is based on the products of company Aladdin:
www.aladdin.com
- A HL-Hardlock (USB or Parallel)
B HASP HW (USB) (from 2010)
C HASP SW (Software) (from 2010)
- The customer specific license protection is installed on a **workstation** (for single licenses) or on a **server** (for site or multiple licenses).
 - FalCon provides also **test licenses** with an expiration of the validity after 30 days.
Please pay attention to the separate notes.
 - After delivery and during upgrade of the FalCon software version an **Activation** of the available licenses can be necessary. This is performed communicating with the FalCon Support.
-

Download the current updates as well as the newest drivers and tools from our web site:
<http://www.falcon.de/falcon/eng/downloadrequest.htm>

A HL-Hardlock Installation

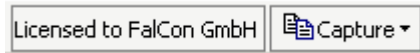
- Install the hardlock driver **hldrv32.exe** on the **workstation** in order to connect to a local hardlock

or

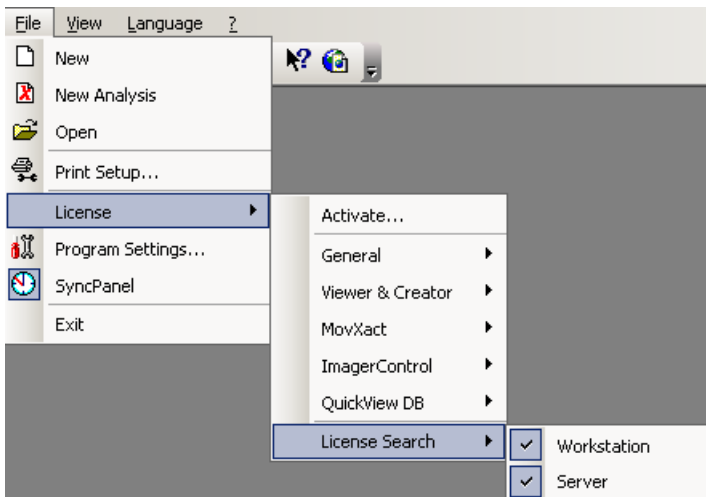
- Install the hardlock server driver **hlsrv32.exe** on the **server** in order to give access to a server hardlock with site or multiple licenses.

Note: In both cases administrator rights are required!

- Plug the hardlock (= dongle) on the parallel or the USB interface.
- After start of the program the status bar shows the detected licensee (right bottom).



- During start the program searches for local as well as server licenses (default setting).
- **Tip:** Control this search via program **eXtra File / License / License Search:**



If you just have a local hardlock, mark only the entry *Workstation*, thus you can save a further possibly time-consuming search in the network.

After you have readout a site license successfully from a server hardlock and saved it into the local registry you might remove both check markers. This accelerates future starts of the program.

Notes for Administrators:

- Install the hardlock tool Aladdin **DiagnostiX: aksdiag32_setup.exe**. Enter in the dialog *Check Hardlock* the FalCon *Module Address* „20458” instead of the default number „29809”. The function **Check Key** tests the access to *Local* or *Network* hardlocks.
- The program **DiagnostiX** enables you to accelerate the search of a server hardlock in the dialog *Hardlock Environment*. Set the environment variable **HLS_IPADDR** of the workstation by the IP address of the server.
- The environment variable **HL_SEARCH** controls, whether only USB interfaces (= **USB**) or only the network (= **IP**) is scanned during search of the hardlock. If it remains undefined or empty both searching ways are used as default.
 (see also *System Control / System / Extended / Environment Variables*)

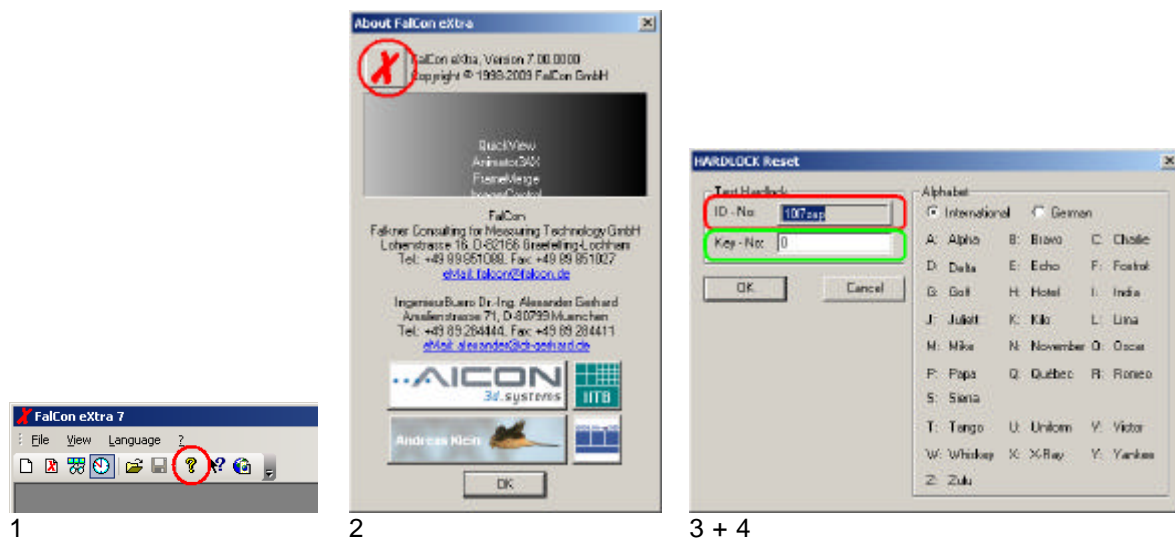
A HL Test Hardlock Installation

- Follow the steps and tips installing a **local hardlocks** (see above).
- After start of the program the status bar shows the detected license including the **remaining period** (right bottom).
- **Note:** In the program **eXtra File / License / License Search** the entry **Workstation** need to be marked.

A HL Test Hardlock Extension

- Usually a test hardlock has a validity period of 30 days.
 - After expiration of the license the program starts only in the restricted demo version. In accordance with FalCon the hardlock can be extended via **phone** following these steps:
 - Be sure that the hardlock is plugged and the drivers are installed.
1. Start the program FalCon eXtra and click on **? / About** or the yellow question mark in the toolbar.
 2. Click with the right mouse button on the red **X** in the About dialog.
 3. In the dialog **HARDLOCK Reset** you see the (unique) **ID No**. Pass this alphanumeric number to the FalCon Support via phone, without closing this dialog window.
 4. Now you will receive verbally the corresponding **Key No**, which you have to enter in the input field. Confirm the input via **OK**: A new license code will be written into the hardlock.
- Note:** the **ID No** changes after every closing & reopening of the dialog. A **Key No** fits only to one unique **ID No**!
- Close the program and reopen it to continue with extended license.

Steps to Extend a Test Hardlock



B HASP HW Installation

- The HASP license protection is carried out as **hardware** solution (= USB Dongle).
- Install the HASP service by the program **HASPUserSetup.exe** (*HASP SRM Run-time Setup*) on the **workstation** in order to connect to a local license

or

- on the **server** in order to give access to a site or multiple licenses, as well as the GUI program **HASPUserSetup.exe** on **all workstations** of the users!
- Plug the hardlock (= dongle) on the USB interface.

C HASP SW Installation (*Test Licenses*)

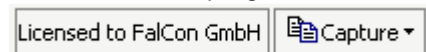
- The HASP license protection is carried out as **software** solution.
 - Install the HASP service together with a **provisional** license key on the workstation using the program **HASPIInstall.exe**, in order to connect to a **local license**
- or**
- on the server in order to give access to a **site or multiple licenses**, as well as the GUI program **HASPUserSetup.exe** on **all workstations** of the users!
 - This installation setup can be started only via the *Command Line Mode* – without GUI: Open a DOS window by the command **cmd** and enter the following command:
<File Path>\HASPIInstall.exe -install

Note: In both cases administrator rights are required!

Notes for Administrators:

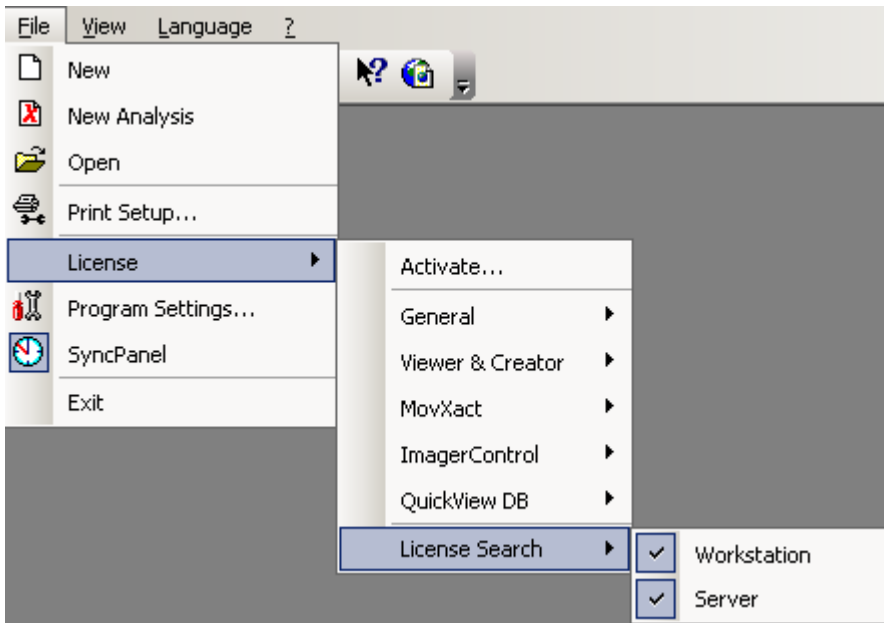
- View the data of the available license protection in the *HASP Admin Control Center* using the web browser: <http://localhost:1947> (see Key, Product, Features)
- The *Vendor ID* „69033“ indicates FalCon and corresponds to the print „ADQZB“ on the HASP HW key. Please contact the FalCon Support regarding questions to the available *Feature IDs*.

-
- After start of the program the status bar shows the detected licensee (right bottom).



- Using the program the first time after delivery or upgrading licenses please pay attention to the notes about **Remote Update Service** (see below).
- During start the program searches for local as well as server licenses (default setting).

- **Tip:** Control this search via program **eXtra** *File / License / License Search:*



If you just have a local license, mark only the entry *Workstation*, thus you can save a further possibly time-consuming search in the network.

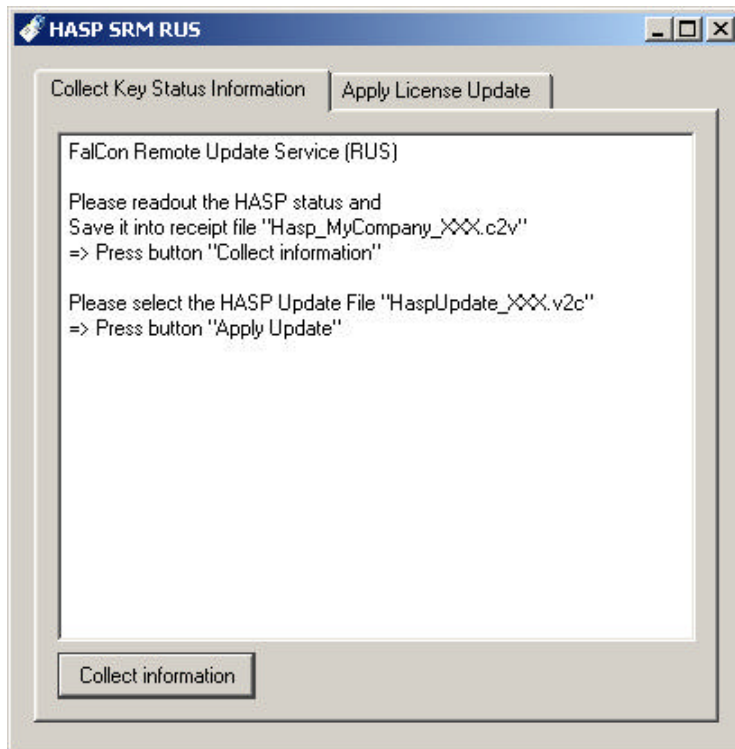
After you have readout a site license successfully from a server HASP and saved it into the local registry you might remove both check markers. This accelerates future starts of the program.

Note: Local test licenses require a marked entry *Workstation*.

B&C HASP Remote Update Service (RUS)

- Using the program the first time **after delivery, upgrading licenses** as well as **extending a test license** an update of the license protection is necessary! This is executed with the aid of the tool:

FalCon_Rus_Service.exe



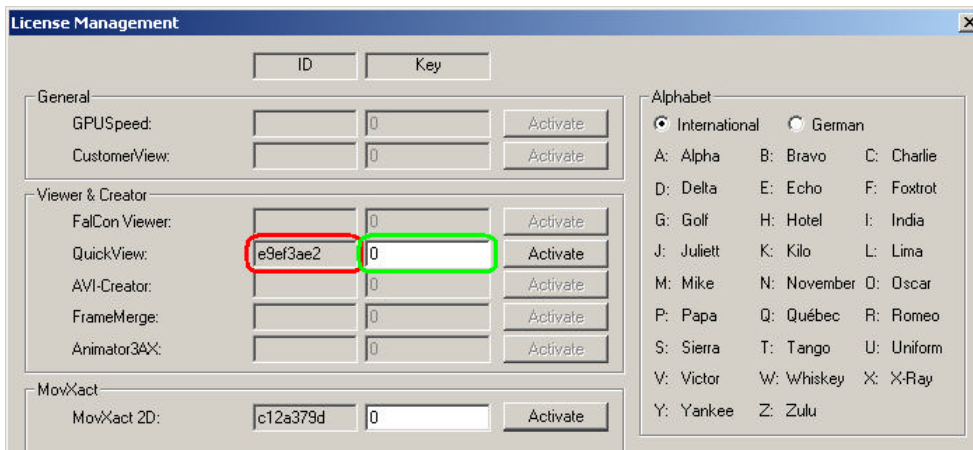
It offers the following application features:

(Please pay also attention to customer-specific notes of the FalCon Support.)

- Readout** data of the HASP license protection:
 - Click on the button „*Collect information*“ in the tab „*Collect Key Status Information*“.
 - Select a meaningful name for the destination file, e.g. „*Hasp_MyCompany_XXX.c2v*“ (*c2v = customer to vendor*)
 - Mail this file containing encrypted HASP data to FalCon.
- Load** update / upgrade of the HASP license protection
 - Select the tab „*Apply License Update*“.
 - Enter the „*Update File*“, which you received from the FalCon Support, e.g. „*HaspUpdate_XXX.v2c*“ (*v2c = vendor to customer*)
 - Click on the button „*Apply Update*“

License Activation

- **After delivery** and during **upgrade** of the FalCon software version (= part of the Software Service Contract) you might have to activate the available licenses:
- Be sure that the current FalCon eXtra version as well as the drivers or services of the license protection are installed properly.
- If the program starts only in a restricted version without enabled licenses – even if the hardlock/HASP is available (see *File / License*)? And can you recognize from the customer name in the status bar („Licensed to ...“), that the license protection can be accessed, then:
- Activate the available modules in the program: *File / License / Activate* following these steps:
 1. The dialog **License Management** shows ID numbers for all licensed modules .
 2. At each module you see the (unique) **ID No**. Pass this alphanumeric number to the FalCon Support via **phone**, without closing this dialog window.
 3. You will receive verbally the corresponding **Key No**, which you have to enter in the input field.



4. Confirm the input via **Activate**: A new license code will be written into the license protection.
 5. Repeat the steps 2-4 for all modules to be activated.
Note: the **ID No** changes after every closing & reopening of the dialog. A **Key No** fits only to one unique **ID No**!
- Close the program and reopen it to continue with extended license.