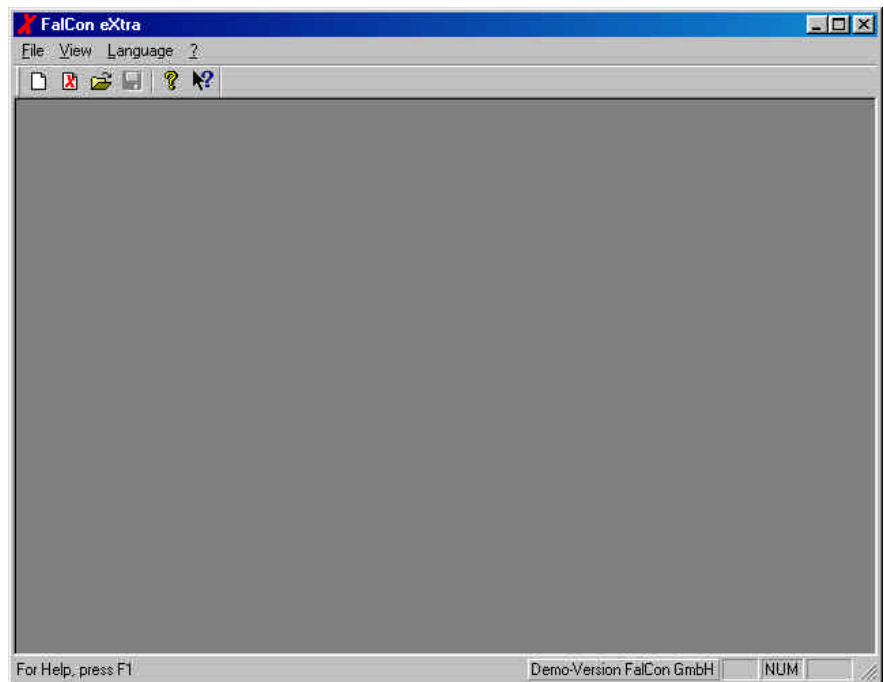


# Standard Menus

---

The menu bar in **FalCon eXtra** depends on the type of document that is currently open. Many menu entries are always the same:



- |                 |  |
|-----------------|--|
| <b>File</b>     | Basic functions for opening, closing, saving, and printing files, for setting up the printer, license management, and program settings, and for a list of documents most recently opened and the program most recently exited. |
| <b>View</b>     | Determines the arrangement of document windows and tool bars on the screen.  |
| <b>Language</b> | Sets the language of the user interface.   |
| <b>Help (?)</b> | Displays program information and brings up online help.  |

---

## The File menu



In the **File** menu you can create new documents, open existing ones, set up the printer, expand licensing, adjust parameters for the program or exit the program.

In the basic menu, in other words before you open a document, the following menu entries are available:

<b>New</b>	Creates a new document
<b>New Analysis</b>	Creates a new MovXact analysis document
<b>Open</b>	Opens an existing document
<b>Print Setup</b>	Selects a printer and a printer link
<b>License</b>	Manages the license keys for the program modules
<b>Program Settings</b>	Opens a dialog box to set global parameters
<b>Exit</b>	Exits FalCon eXtra

Depending on the types of individual documents, this list will be expanded with special menu entries (see description there). When a document is open, the basic entries are:

<b>Close</b>	Closes the active document
<b>Save</b>	Saves the active document
<b>Save As</b>	Saves the active document under a new name
<b>Print</b>	Sends the active document to the printer
<b>Page Preview</b>	Shows what the appearance of the printout will be
<b>Send To</b>	Sends the active document by e-mail

An additional tool bar is available to you for frequently required menu entries:



Creates a **New** document



Opens a **new analysis** with MovXact or MovBag



Opens an existing document. FalCon eXtra displays the **Open** dialog box where you can find and open the desired file



**Saves** the active document or the active template under the current name. If you have not yet given a name to the document, FalCon eXtra displays the **Save As** dialog box

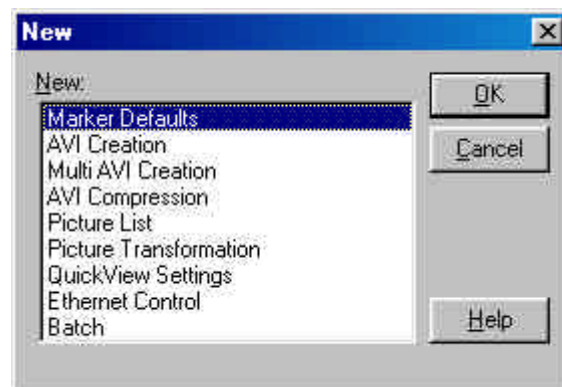


Provides information **about** the version of the program



Starts context-sensitive help.

## New



Use this command to create a new document in FalCon eXtra. You can select the file type of the file to be created in the **File/New** dialog box. It is not possible to create picture files (Bayer, BMP, Motion, JPEG, BLD or TIFF files) as new files.

Indicate the document type you would like to create (depending on the modules that are licensed, it is possible that your selection may be restricted).

**Marker Defaults \*.MRD** : Marker defaults for eXtra MovXact.

**AVI Creation \*.BAC** : A document for creating a Video for Windows file (= AVI). You can combine various individual pictures of different file formats, for example Bayer, BMP or TIFF files, into an AVI file. It is also possible to insert logos and text passages. The AVI file is saved in uncompressed format. This means it may be a very large file in some circumstances, but on the other hand you do not have to deal with loss of quality. If you only want to view the AVI files you have created on the screen, you should compress them after viewing them. If you need the AVI file for analysis for which reproduction of detail is highly important, however, for example for automatic point tracking, you should make use of an uncompressed file.

**AVI Compression \*.BAP** : A document for compressing AVI files. Depending on the type of compression you have selected, it is possible to achieve compression rates of well over 90%. No general rules can be given for this, since results will depend greatly on the nature of your data and the quality requirements. Compression by 90% will still generally ensure a reasonable level of quality for the picture in question. You should note, however, that compression generally requires a good deal of computing power. It may therefore require several minutes.

**Multi AVI Creation \*.MAV** : A document for creating multiple AVIs simultaneously. To do this, the user selects from picture files within a compact document dialog box, makes and checks settings for optimization, and may also select optional compression.

**Picture List \*.PLI** : A container file to describe an associated list of picture files. The picture sequence defined in this manner can serve as an input sequence during a MovXact analysis.

**Picture Transformation \*.TRA** : A document for converting various sequence file formats with simultaneous post-processing. For example, an AVI file can be divided up into a sequence of individual pictures. You can select a rectangular section from the area of the picture, or you can process the pictures in terms of contrast or colors. These steps can be performed individually, picture-by-picture, or globally for all pictures together.

**QuickView Settings \*.PSE** : You can selectively save settings for the Quick View module. FalCon eXtra automatically saves the last settings to be used so they are available for you when you start the program again. You can save the settings you make for a specific type of test, for example, by using the settings files.

**Ethernet Control \*.ETH** : A document to control Ethernet-capable high-speed video cameras. The cameras are identified on the network, parameters are set for them, and the test is prepared. After the impact test, picture data from the cameras is downloaded and AVIs are created in parallel.

The documents can be saved. Using batch files facilitates work procedures that are frequently repeated.

### Shortcuts

Tool bar:  Keyboard: **Ctrl+N**

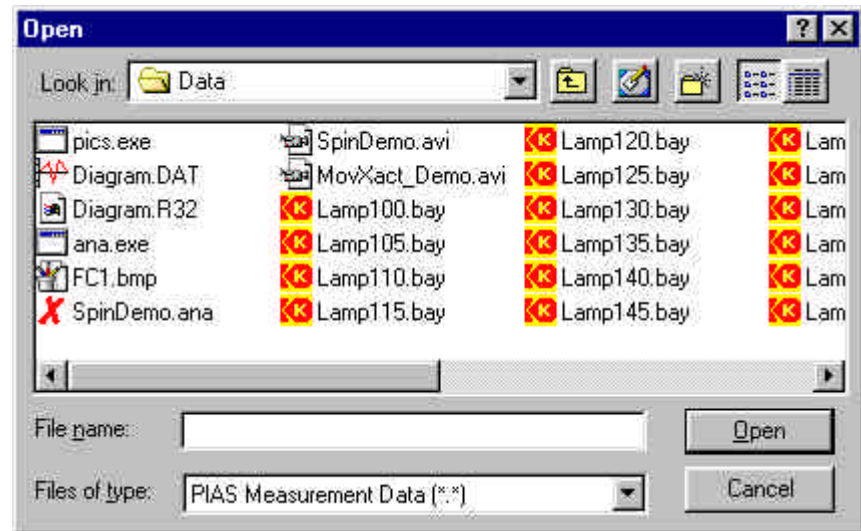
## New Analysis

You can use this command – which is not the same as creating a new document with **New** – to define a new MovXact or MovBag analysis.

The **Open** command is used to open an already existing file:

## Open

*You can create new documents with the command **New***



Use this command to open an existing document in a new window. Multiple windows can be opened at the same time. You can use the **Window** menu to switch back and forth between several documents that are open.

The following options will help you to indicate the file to be opened:

**File name** Enter the name of the file or select it from the list. This box displays only file with the filename extension selected by you in the **File type** box.

**File type** Select the type of the file to be opened.


You can specify these additional details under **Find**:

**Drives** Select the drive on which FalCon eXtra saved the file you want to open.

**Directories** Select the directory in which FalCon eXtra saved the file you want to open.

**Network** Use this button to assign a link to a network drive to a drive letter.

### Shortcuts

Tool bar: 

Keyboard: **Ctrl+O**

## Viewing Documents

File types supported by FalCon eXtra:



### Movie

\*.AVI "Video for Windows" file



### Measurement Data

\*.\* PIAS measurement data = work file (please note: since work files have no one definitive extension, all files are displayed).  
\*.DAT DIAdem measurement data  
\*.ISO ISO Crash measurement data  
\*.DAT Dats measurement data  
\*.TBL Motion measurement data  
\*.MME Multimedia Data Exchange Format  
\*.BAG eXtra Multi-D Meßdaten



### Pictures

\*.BAY Kodak Bayer picture  
\*.BLD Weinberger picture (image sequence)  
\*.CIN Photosonics picture (image sequence)  
\*.TIF TIFF picture  
\*.JPG JPEG picture  
\*.BMP Windows bitmap picture  
\*.MOT Motion picture  
\*.WMF WMF picture  
\*.EMF EMF picture



## Working Documents

FalCon eXtra document types:



### MovXact, MovBag

- \*.ANA MovXact or MovBag analysis
- \*.MRD MovXact marker defaults



### CamFolder

- \*.CFO CamFolder camera calibration database
- \*.APT CamFolder or Mov3D ASCII point table



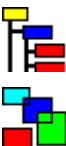
### Quick View

- \*.BAC Creates AVI files from picture files
- \*.BAP Compresses AVI files
- \*.MAV Creates and compresses several = "multi" AVI files from picture files
- \*.PLI Container file for a picture list
- \*.TRA Picture format transformation
- \*.PSE Quick View settings
- \*.ETH Ethernet control
- \*.FBT FalCon eXtra batch file

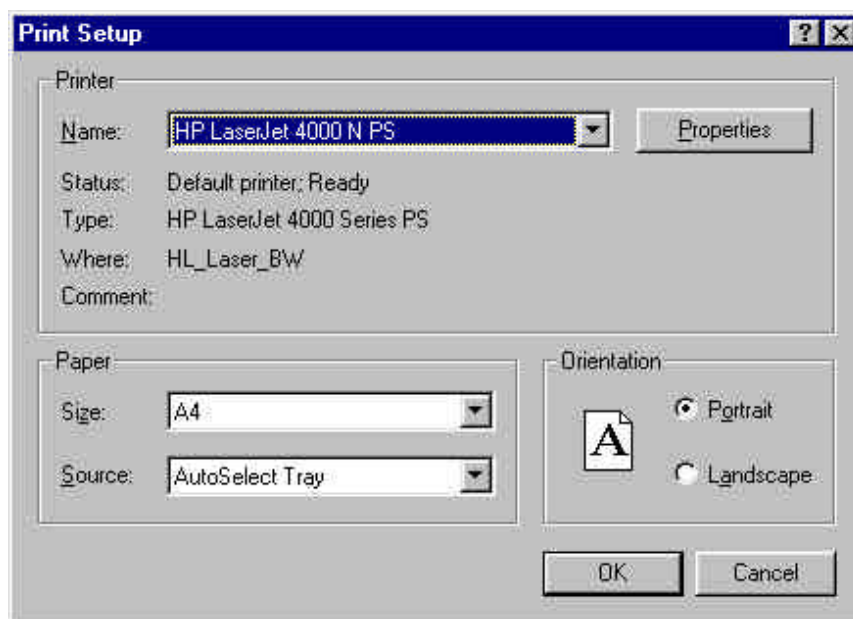


### Customer View

- \*.CVT Customer View test file
- \*.LYT Customer View layout file



## Print Setup



With this mask you can select the printer you would like to use for document printouts. The printer you select is only valid until you exit the program. When the program starts up, the **Default printer** is automatically selected. The **Default printer** is defined in **Windows system control**. If you want FalCon eXtra to send files to another printer, you can select it in the **Name** list box.

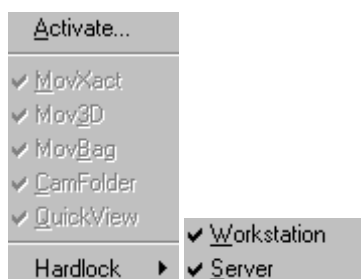
The **Portrait** and **Landscape** option buttons determine the orientation of the printout on the paper.

You can use the list boxes **Size** and **Source** to specify the format of the printer paper being used as well as the paper tray to be used (only if your printer uses more than one tray).

The **Properties** box provides you with additional printer-specific setting possibilities, such as color mixing, print density, resolution and much more.

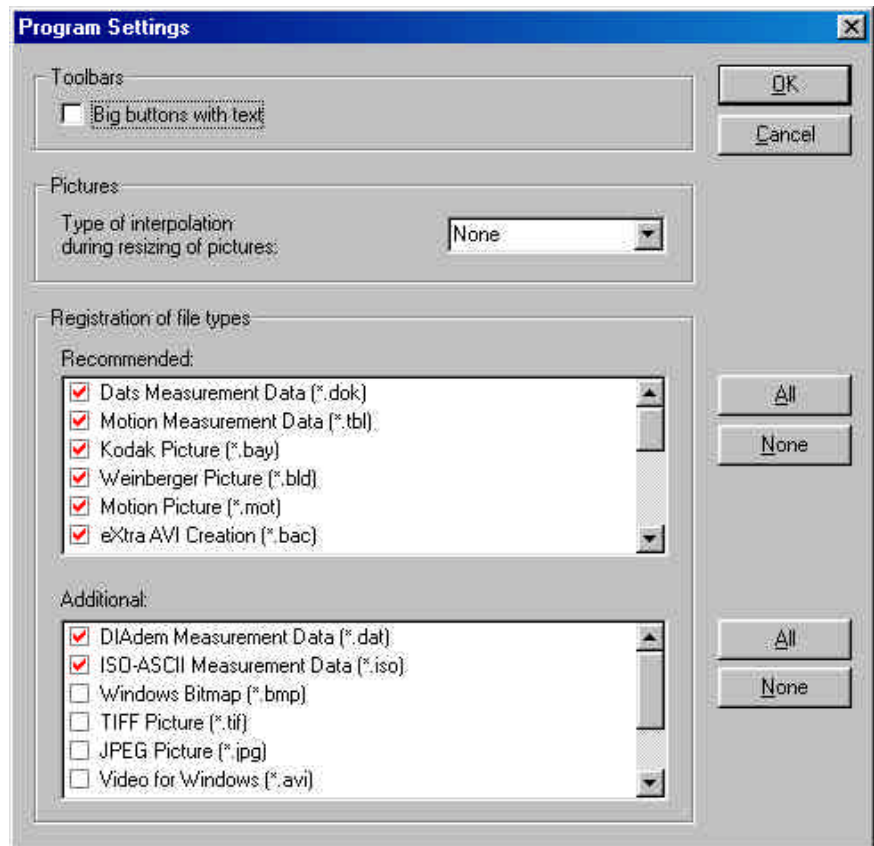
## License

Modules can be activated selectively. Please use the FalCon hotline to obtain the introduction, how to set the **Workstation** and **Server** hardlock checks, or ask for the necessary **activating** codes.

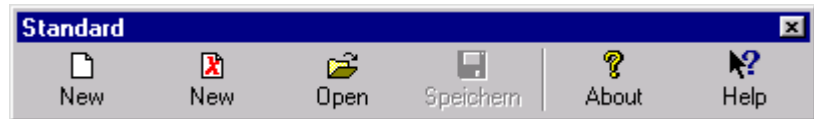


## Program Settings

In this dialog box you can make global settings for the FalCon eXtra program package.



Check the **Big buttons with text** check box if you would like the icons in the tool bars to be displayed with a brief description, for example:



In dialog boxes of several document types, **Pictures** are displayed reduced or enlarged. See for example **Picture size** in the *Picture* document. Without explicit interpolation (= **None** mode), this can result in visible artifacts when the zoom factor is high. To do this, select a smoothing interpolation type from the list box, for example **Bilinear**.

Note that the amount of time required internally for processing while displaying the picture or refreshing the screen may increase significantly!

From the two list boxes you can actively select **File types** that are automatically linked with the FalCon eXtra application program through the **Windows registry**. When you double-click on a file of the appropriate type, for example in the *Windows Explorer*, FalCon eXtra is started and the document is displayed.

The **Recommended** list contains typical high-speed picture and measurement data as well as all document types native to FalCon eXtra. Verify in the **Additional** list which files you would like to open predominantly with FalCon eXtra.

---

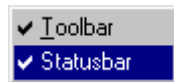
**Note:** Please refer to the newest **Release Notes** for changes of these settings!

## Exit

Use this menu entry to exit the FalCon eXtra program. If you have made changes in the document but have not yet saved, the option to save the document appears once more. All settings for the picture processing functions are stored in the registry, so that when the program is started again they will also be available again.

---

## The View menu



In the **View** menu you can specify the properties that determine the screen makeup. You can determine whether you want to work with tool bars and a status bar.

The following commands are available in this area:

### Tool bar

If the tool bar is displayed, a check mark will appear next to the menu entry for this command.

FalCon eXtra uses five different tool bars, each of which can be turned on and off independently.

- Default
- Measurement data
- Picture processing/optimization
- Movie
- Analysis

### Status bar

If the status bar is displayed, a check mark will appear next to the menu entry for this command.

## Tool bar

Use this command to show or hide the tool bars. The tool bars contains a number of buttons for the most commonly used commands in FalCon eXtra, such as **Open/File**. If the tool bars are displayed, a check mark appears next to that menu entry.

The tool bars can be moved with the mouse. When you do this, FalCon eXtra takes note of the arrangement you select, so that changes made in one session are also available when the program runs at a later time.

## Status bar

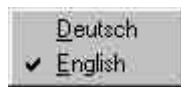
Use this command to show or hide the status bar. The status bar describes the action that is being run by the selected menu entry of a button that was clicked on the tool bar, and displays the status of keys that can be determined. If the status bar is displayed, a check mark will appear next to the menu entry for this command.

Depending on the document that is active, additional information about it may be displayed in the status bar.

You can also see on the status bar whether you are working with a licensed version of FalCon eXtra or with a demo version. If you have a test security device for an evaluation phase, the expiration date is indicated here. Please note that not all functions described in this manual are available in the demo version.

---

## The Language menu



Here you can determine which language the program will use.

The following commands are available in this area:

- |                |   |
|----------------|---|
| <b>Deutsch</b> | Switches the program to German dialog boxes.  |
| <b>English</b> | Switches the program to English dialog boxes. |

### Deutsch (German)

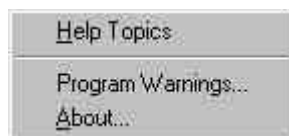
Use this command to switch the program to the German language. If you are already using the German version, a check mark appears next to this entry. Please note that this change does **not** apply to menus that are already displayed. To switch the program over completely, restart FalCon eXtra.

### English

Use this command to switch the program to the English language. If you are already using the English version, a check mark appears next to this entry. Please note that this change does **not** apply to menus that are already displayed. To switch the program over completely, restart FalCon eXtra.

---

## The Help menu (?)



The **Help** menu contains the following commands that provide you with support in using this application:

The following commands are available in this area:

- |                         |   |
|-------------------------|---|
| <b>Help Topics</b>      | Displays the index of topics for which help is available  |
| <b>Program Warnings</b> | This contains a record of references and warnings that can be generated when FalCon eXtra is started. |
| <b>About...</b>         | Displays the version number and lists the active modules.   |

### Help Topics

Use this command to start online help. An overview of topics for which help is available will appear.

### Program Warnings

References and warnings may be generated when the program is started. As a reminder, a record of these messages appears here. In addition, immediate display can be turned off when the program is started. This is recommended,

for example, to suppress the reference to switching to true color mode during constant screen setting with 16-bit color depth.



## About ...



Use this command to display the version number of your copy of FalCon eXtra. This contains a reference to the Copyright.

If you would like to activate or extend your test security device, click on the red **X icon** with the right mouse button. You will be prompted to enter a license code. Please contact the FalCon hotline for this purpose – without exiting the dialog box!

A square section of text lists all activated modules as well as special procedure with your sub-version number.

For customer support, questions or comments, please contact one of the addresses listed here.