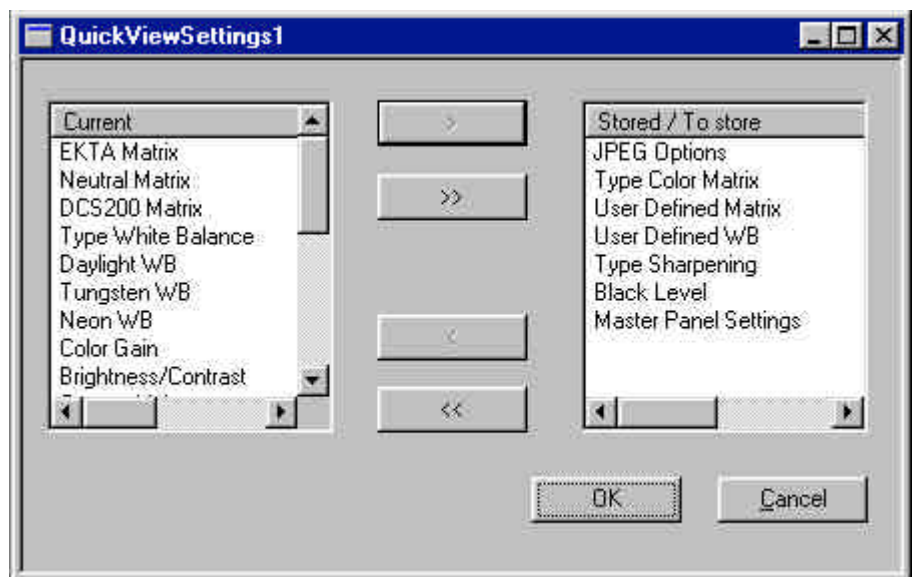


Program Settings

This document is used for specific storing and loading of settings for the Quick View module. FalCon programs automatically store the last settings that were used in the Windows registry. You have the option of selecting only the relevant areas but of leaving all other settings as they are.

This document type is used primarily for different types of tests.



Use the "arrow" buttons either to move only the selected ranges of settings or all settings from one list into the other. The currently active items are displayed on the left side of the page, while the stored items or the items to be stored are displayed on the right side.

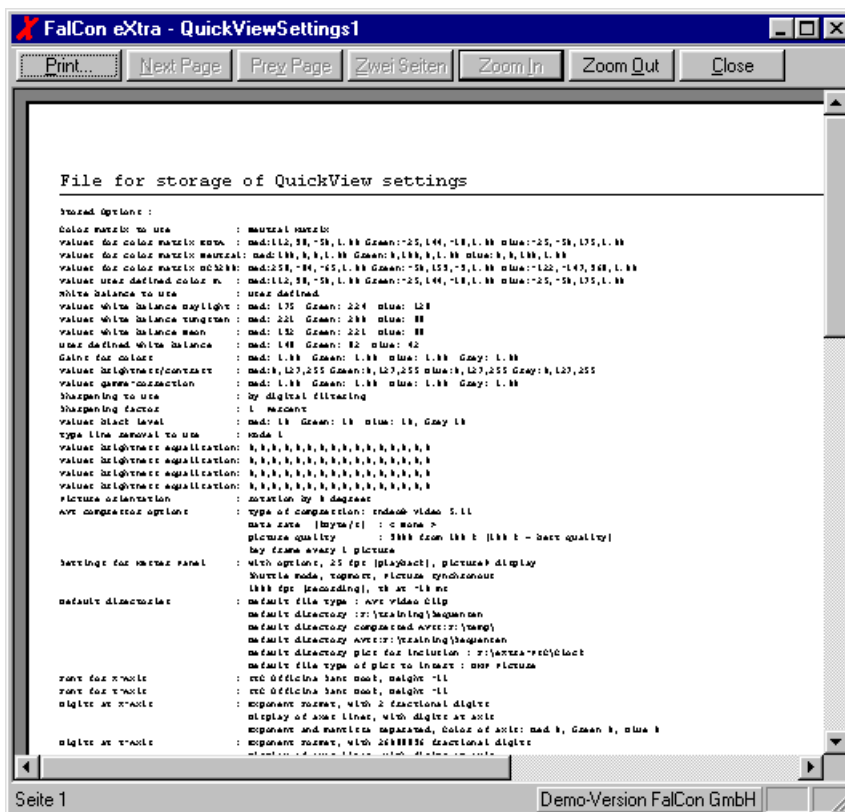
The majority of settings under an entry are hidden.

Entry	Values
Type of color matrix	The color matrix to be used
EKTA matrix	The values for the EKTA color matrix: Red, blue,

Neutral matrix green, 4 each
The values for the neutral color matrix: Red, blue,
green, 4 each

DCS200 matrix	The values for the DCS200 color matrix: Red, blue, green, 4 each
User matrix	The values for the user color matrix: Red, blue, green, 4 each
Type of white balance	The white balance to be used
Daylight balance	White balance values for daylight: Red, green and blue
Halogen balance	White balance values for halogen lighting: Red, green and blue
Neon balancing	White balance values for neon lighting: Red, green and blue
User balance	White balanced user entry and mouse: Red, green and blue
Color gain	Linear color gain Red, green blue and gray
Brightness/contrast	Values for the linear brightness/contrast adjustment: Red, green blue and gray, 3 values each
Gamma values	Gamma brightness adjustment Red, green blue and gray
Sharpening type	The sharpening algorithm to be used.
Sharpening factor	The factor for sharpening
Black balance	Values for black balance: Red, green blue and gray
Line deletion	The type of line deletion
Brightness balance	Values for sensor brightness balance: 16 values
Picture alignment	Rotate: 1 value, flip: 2 values
Compression options	The compression algorithm, data rate, quality and key frames
Master panel settings	With/without options, playback speed, time/picture display, auto-repeat/shuttle, playback speed, T0 time
Directory default settings	Opening file type and directory, directory for compressed AVIs, directory for inserting pictures, insertion file type
Font X axis	Font for the time axis
Font Y axis	Font for the values axis
Numeric entry on X axis	Format, places after decimal point, entry on axis/labels, exponent/mantissa, color
Numeric entry on Y axis	Format, places after decimal point, entry on axis/labels, right/left flush, color
Color settings	Color of graph, color of movie marker

Page Preview



The printout of stored program default settings facilitates a log in overview list format.