

Measurement Plots in FalCon eXtra 6.0

The viewer for measurement data is completely redesigned and offers significantly extended features for visualization and presentation.

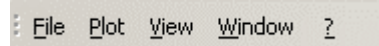
„Plots“ can be saved as documents, which contain not only the curve data themselves but also all attributes and settings. After reopening the diagram will be restored with all graphs without need of the original measurement files or a channel selection.

Start a measurement plot via „File/New“. Like so far you can alternatively open a measurement data file directly or drag&drop the file icon in the desktop of FalCon eXtra; in this case no control message asks whether you would like to save the modified plot document while closing the plot window.

Supported measurement file formats:

- DIAdem *.dat
- ISO-Data *.iso
- ISO MME *.chn
- Dats *.dok
- Pias *.#
- **ASCII Tables** *.txt

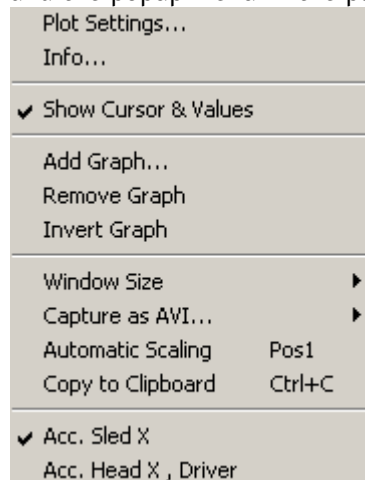
The user interface offers the menu in the main window:



and the toolbar in the plot window:



and the popup menu in the plot window:



and several hot keys (see below) !

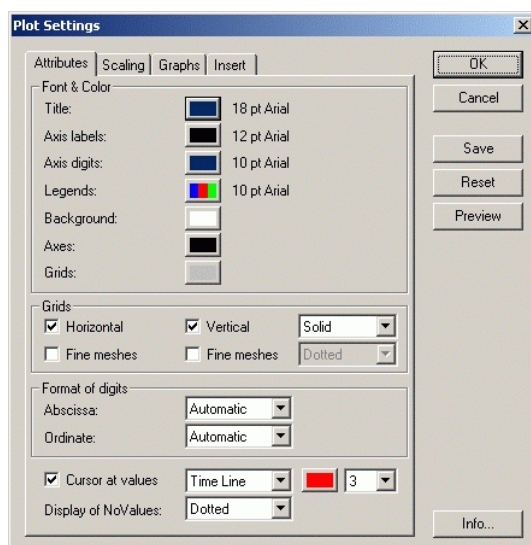
The following diagram types differ:

- Time Graph (abscissa continuously increasing)
- **Combined Graph and Combined Graph(t)**
- **2D Graph and 2D Graph(t)**

Overview

- Number of graphs within one plot window unlimited
- **Auto-Grid and Auto-Ticks always in 1,2,5 raster**
- **Display of all graph names by color identification, active graph = bold**
- Numerical values in status bar
- Info about header data
- **Concise scaling**
- **Interactive scaling via mouse zoom in window**
- **Size of window is stored in the plot document and is restored while reopening**
- **Loading an additional graph from the same data file accelerated**
- **Simple selection of the active graph: popup menu or double-click in window = switch to next graph**
- **Insert text notes**
- **Insert horizontal and vertical limit lines**
- **Insert logos / window background**
- Automatic display of minimum&maximum in MovXact
- Synchronization with Master-Panel (at time units s, ms, us, min)
- **Temporally synchronized value cursor not only in time diagrams but also at graphs = f(t)**
- **Print with preview**
- Copy into clipboard
- **„? / About FcPlot“: Copyright note of basis software**

Attributes



- Fonts and colors individually adjustable
- **Grids configurable**
- **Automatic format of axis digits**
- **Value cursor selectable**
- **Reset to FalCon defaults (= factory settings)**
- **Save the current settings and restore to „My Defaults“ (= values from registry): attributes, auto-texts, logos and scaling**

Graph Parameters

Attributes | Scaling | **Graphs** | Insert

Channel name (O): Acc. Head X , Driver

Channel label (O): Acceleration Head in X of Driver

Title: Test = (\$SOURCE)

Legends: Top Bottom ?

Graph

Legend: Acc. Head X , Driver

Line color & size: Auto 1

Filter: 0 Inverted

Abscissa

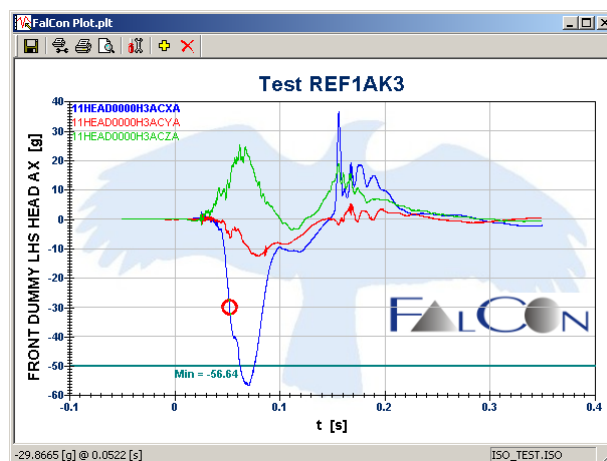
Description: Time channel for 1000 Hz [s]

Ordinate

Description: Acceleration Head in X of Driver [g]

Axis: Left Right

- Label of axes editable
- Automatic color indexing after adding new graphs: color = f(index)
- Simple assignment to left / right ordinate axis
- Line size variable
- Auto-texts: supported logical names (placeholders) in the plot title and legends:
 - 1) Source of channel (\$SOURCE)
(without file extension)
 - 2) Name of ordinate (\$ORDNAME)
 - 3) Label of ordinate (\$ORDLABEL)
 - 4) Name of abscissa (\$ABSNAME)
 - 5) Label of abscissa (\$ABSLABEL)
 - 6) Legend (\$LEGEND)
 - 7) Time value of contour(t) (\$TIME)
 as well in notes:
 - 8) Minimum on abscissa (\$MINABS)
 - 9) Minimum on ordinate (\$MINORD), (\$MIN)
 - 10) Maximum on abscissa (\$MAXABS)
 - 11) Maximum on ordinate (\$MAXORD), (\$MAX)



Hot Keys

Keys	Action
Ctrl+Mouse	Show and move value cursor by mouse movements
Ctrl+C	Copy into clipboard
Ctrl+I	Open the Info dialog
Ctrl+A	Open the Plot Settings dialog / tab Attributes
Ctrl+S	Open the Plot Settings dialog / tab Scaling
Ctrl+G	Open the Plot Settings dialog / tab Graphs
Ctrl+E	Open the Plot Settings dialog / tab Insert (<i>Enter</i>)
Ctrl+L	Active graph on left axis
Ctrl+R	Active graph on right axis
Ctrl+T	Legends top
Ctrl+B	Legends bottom
Ctrl+Change Window Size	Change window size of all plot windows
Ctrl+X Ctrl+Close	Close all plot windows
Insert	Add graph
Delete	Remove graph
F5	Refresh window
End	Automatic graph colors
Home	Automatic scaling of all axes
+ Ctrl	Apply the (possibly stored) scaling from the registry
+	Window size +5%
-	Window size -5%
Ctrl+"+"	Enlarge scaling = zoom out in all directions by 25%
Ctrl+"-"	Reduce scaling = zoom in in all directions by 25%
Arrow keys	Move scaling: right, left, top, bottom in each case by 50%
Ctrl+Z	Restore last scaling
Ctrl+"Save"	Function „Save As“ (via „Save“ symbol in plot window)
Ctrl pressed	Apply channel specific changes in Plot Settings dialog / tab Graphs for all graphs (keep key pressed during selection or after completion of text entry)