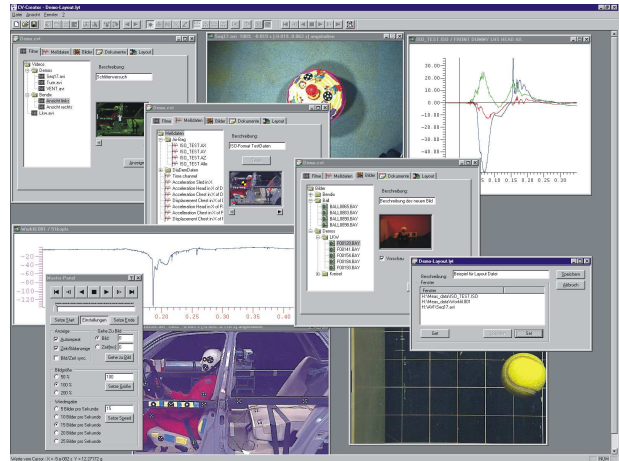
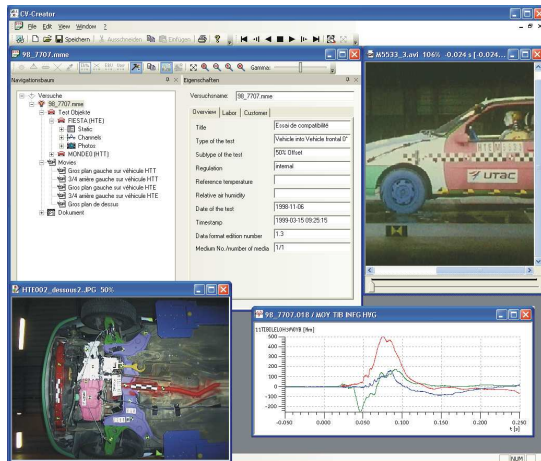


## FalCon Customer View

### The Presentation and Distribution Tool



### Main Features:

#### Customer Writer

- Create automatically customer copies – *just record one directory on CD*
- Distribute viewing part to your „customers“ free of charge – *the installation directory will be created automatically*

#### Layout

- Define presentation layouts – *focus to the important details*
- Easy to understand – *overview sketches show camera and measurement positions*
- Easy to handle data distribution – *add via drag-and-drop*
- Free grouping within the data structure – *select names and add comments (saving only as cv-file)*
- A full set of features more - *inclusive all well known processing, viewing and synchronization tools of FalCon Quick View – even in the viewing part*
- Export/Import layout-files to/from XML format

#### ISO-MME Creator

- Merge several partitions of tests – *all data of test into one container*
- Input of multimedia-data: AVIs, images, measurement data, documents and static data
  - \* Rename all photos with the help of logical names
  - \* Indication of number of novalues-channels
- Preview measurement channels, AVIs, images
- Input and modification of descriptive data and parameters in clear input masks
- Transform raw measurement data formats
- Creation of new MovXact analysis directly with the MME data and movies
- Convert from CV folder to ISO MME and vice versa
- Saving of the data according to **ISO/TS 13499** Data V1.6 and parallel Version 2.0 (Beta Version)
- Easy navigation with the help of clearly arranged ISO-MME-tree structure selected to test objects and measurement points
- Viewer for all data incl. movie player with viewing features (zoom, rotation, mirror ...) and measurement plots with adjustable attributes and parameters (display all names of curves with color identification, insert text notes, limit lines and logos ...)
- Free editable user interface

**For everyone who can't keep the data to oneself!**

## Presentation Tool

---

**FalCon Customer View** makes presentations of AVIs, pictures and measurement graphs as easy as child's play. The five data areas of a test file – films, measurement data, pictures, documents and layout – can be filled in via drag-and-drop. You can create various groupings within the individual areas – similar to a directory tree – except that in this case you also have the additional possibility of assigning descriptions to the groups or entries. For example, to show the location on the object where a measurement channel was recorded, you can insert icons in overview pictures that can be freely defined. Of course this works in reverse as well: clicking on a symbol within the picture immediately causes the corresponding entry to be selected within the tree view. All associated data of a complete test or a series of tests can thus be combined together to provide an overview, or can be archived.

**Customer View** has display modules for AVIs, all commonly used picture formats (including the original formats of the camera manufacturers as well as the most important measurement data formats (including DIAdem, ISO-Crash and others). Single pictures can be edited as in the FalCon Quick View module. Almost everything can be included under the "Documents" tab: text files, Excel spreadsheets, databases and even independent programs. Double-clicking on a document starts the corresponding program (the one associated with it through the Windows registry).

The layout files are an especially important feature: they determine the way in which the screen is divided up, for example at the top left an AVI positioned on picture 23 at normal size; at the top right an enlarged view of a JPEG picture; at the lower left a small window with a measurement graph; and at the lower right a large window with several measurement graphs. After this, you simply create a new layout, save the screen distribution setup and you're done! To bring back the same arrangement later on, simply double-click on the layout file. It's that easy to create presentations and to highlight important details in the results!

## Distribution-Tool

---

An additional feature is integrated for service providers: simply clicking with the mouse will create a "customer version". This also assigns a directory in which all data will be copied based on a specified directory structure, no matter where the original data comes from. The **Customer View** also makes certain that files with the same name are not overwritten, and that files used multiple times are only copied once. An installation director is created automatically. A special viewing version of the program can be installed on the customer computer with it. Now just burn the entire directory onto a CD.

## ISO-MME Creator

---

The ISO MME Creator is a product for data viewing and processing for ISO MME Data structure as well as for conversion of different raw measurement data formats according to **ISO/TS 13499**. By using the clearly arranged ISO-MME-tree structure an easy navigation through the data inventory is enabled selected to test objects and measurement points and therefore a quick and comfortable viewing of the data of diverse formats is ensured. In this tool a movie-player as well as a measurement diagram output is integrated, so AVIs could be played synchronized with measurement graphs and be assessed. Different graphs could be considered for comparison in one diagram. The clear input masks support the replenishment of multimedia-data and possibly necessary changes of their parameters simply and quickly: Replenish or correct the descriptive values via text input.

The ISO MME Creator allows the conversion of several measurement data formats in ISO MME. As one further feature it offers the possibility to merge several partitions of tests into one container automatically. Already existing additional data as lens descriptions and adjustment by AVIs, which were be done e.g. with FalCon ImagerControl, are integrated automatically in the ISO MME-file.

## Creator + Viewer-Version

---

With the **CV Creator Full Version** you create new test or layout files and compile a customer CD. The **CV Viewer Customer Version** may be distributed without any limitation or license fee. It contains all the viewing options listed above, but it does not permit – in contrast to the CV Creator full version – changing the documents or data structures.

## Technical Framework:

---

- Program system for computer platforms under WIN Server 2008 / 2012 / 2016 / 2019, WIN 7 / 8 / 10
- User interface compliant to MS-Windows
- **Technical specifications are subject to change**